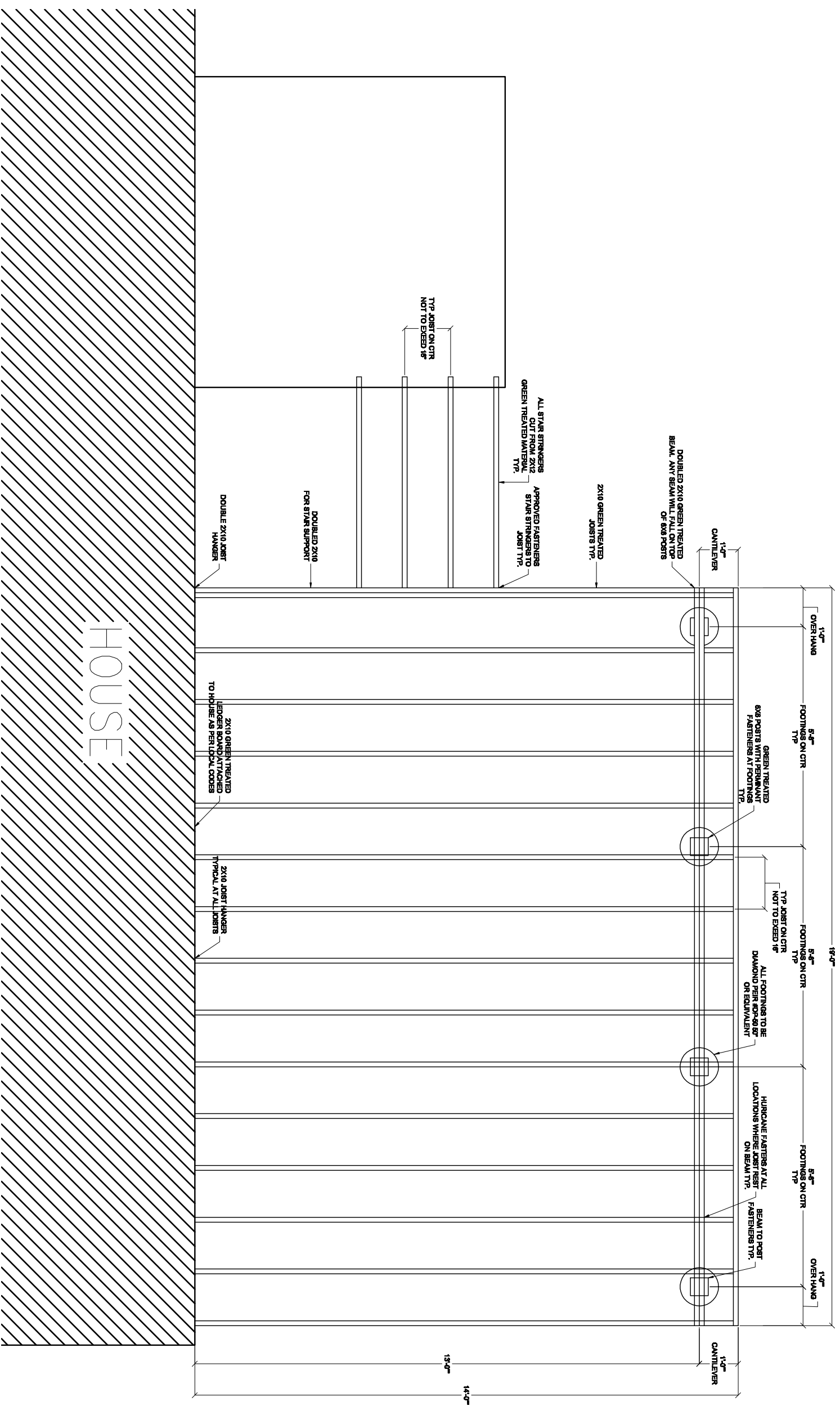


TYPICAL DESIGN NOTES:  
 - ALL STAIR STRINGERS & STAIR TREADS WILL BE COMPOSITE (IMBERTECH) 1" THICK X 3 1/4" WIDE  
 - (VERT) 1/2" ON CTR JOIST SPACING IS ASSUMED  
 - ALL RAILING POST AND BALUNES TO BE ALUMINUM TO ADHERE TO ALL LOCAL CODES

DECK SURFACE APPROX 52" ABOVE GROUND



1 SUPPORT FRAMING  
 3/4" = 1'

RESIDENCE DECK DRAWING	
DATE	SCALE
1	1 OF 4